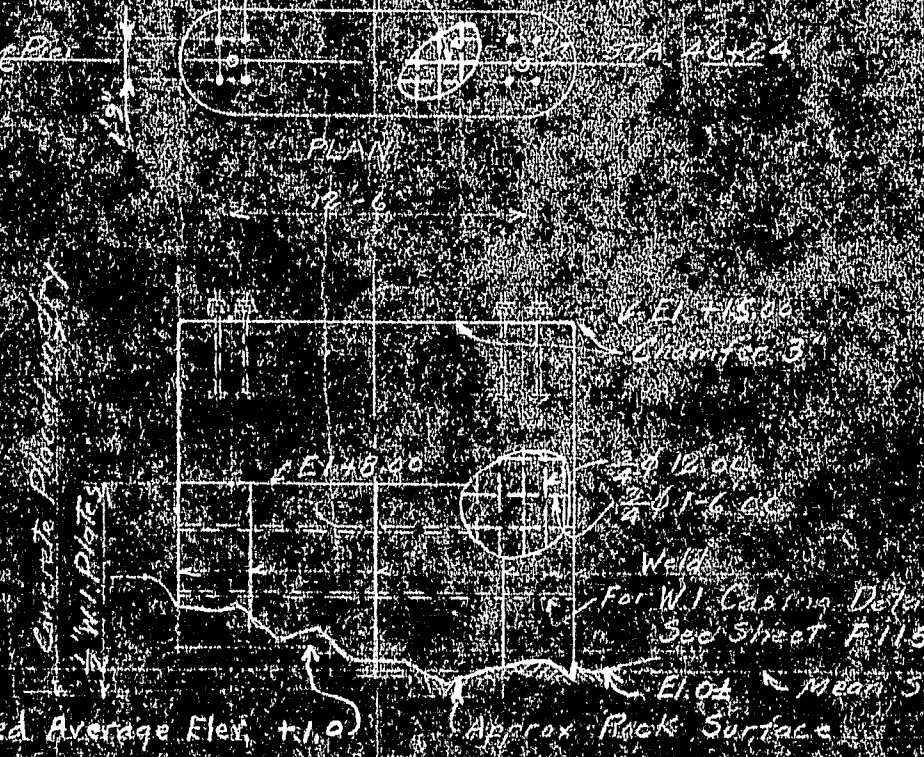
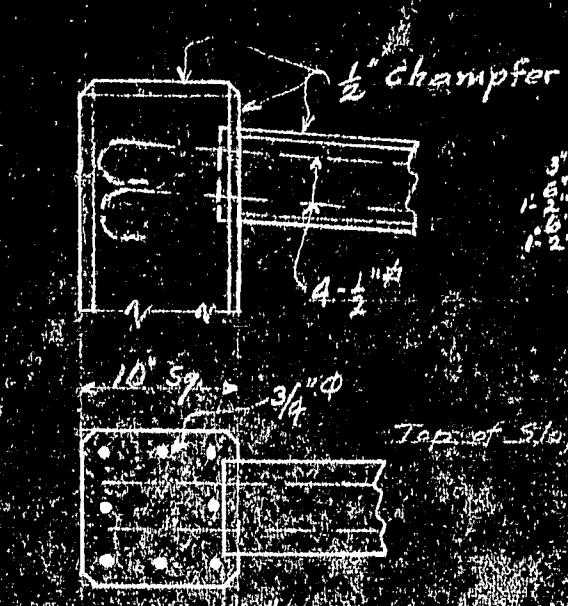


SPECIAL NOTE:
Should contractor choose to construct site of Pier 3
by use of dam, well points or other means,
the float pillars may be founded directly on rock
as in Pier No. 6, the concrete base being omitted.
W.I. casing must be carried down to EL-8.00.

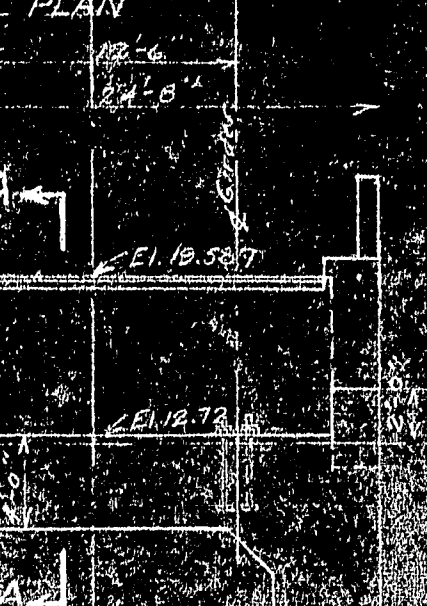
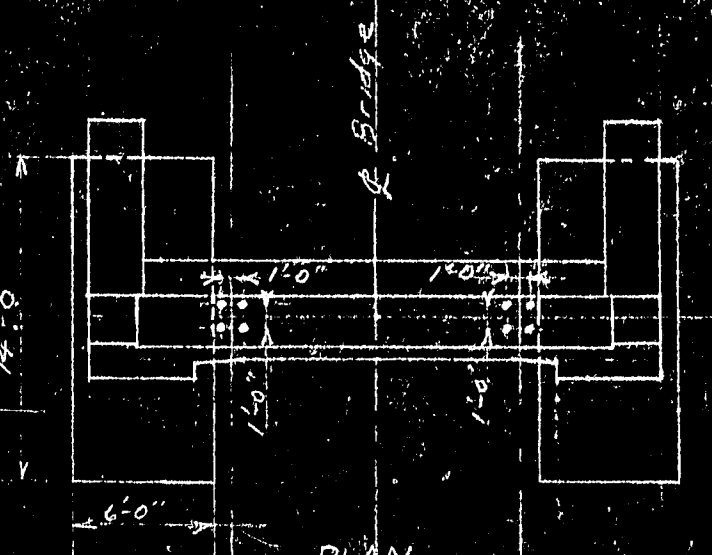
20 hoops 1'-0" O.C.
32-1" Vertical Bars

SECTION THROUGH SHAFT

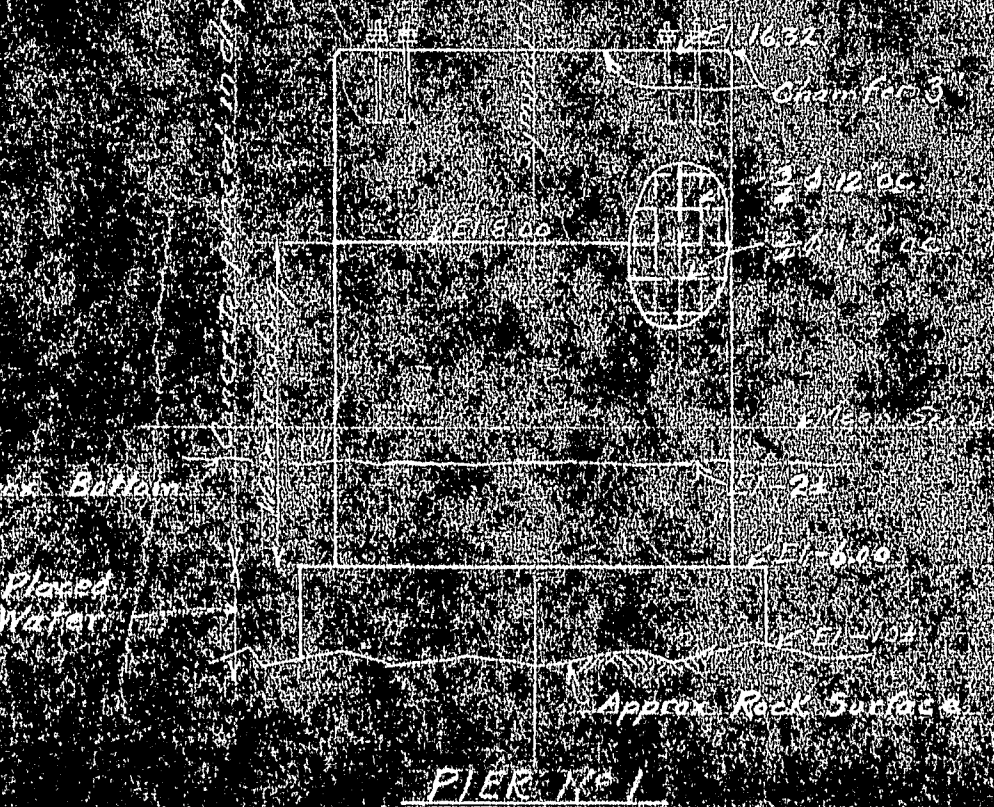


PIER NO. 7

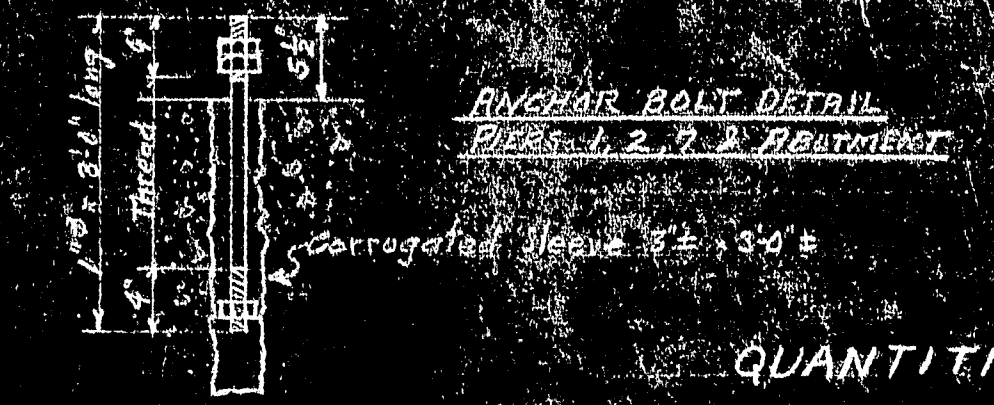
SPECIAL NOTE:
Should contractor choose to construct site of Pier 7 or Pier 1
by use of dam, well points or other means,
the pier may be founded directly on rock as shown
for Pier No. 7, the base being omitted.



PIER NO. 2



PIER NO. 1



ANCHOR BOLT DETAIL
PIERS 1, 2, 7, 8 ABUTMENT

QUANTITIES

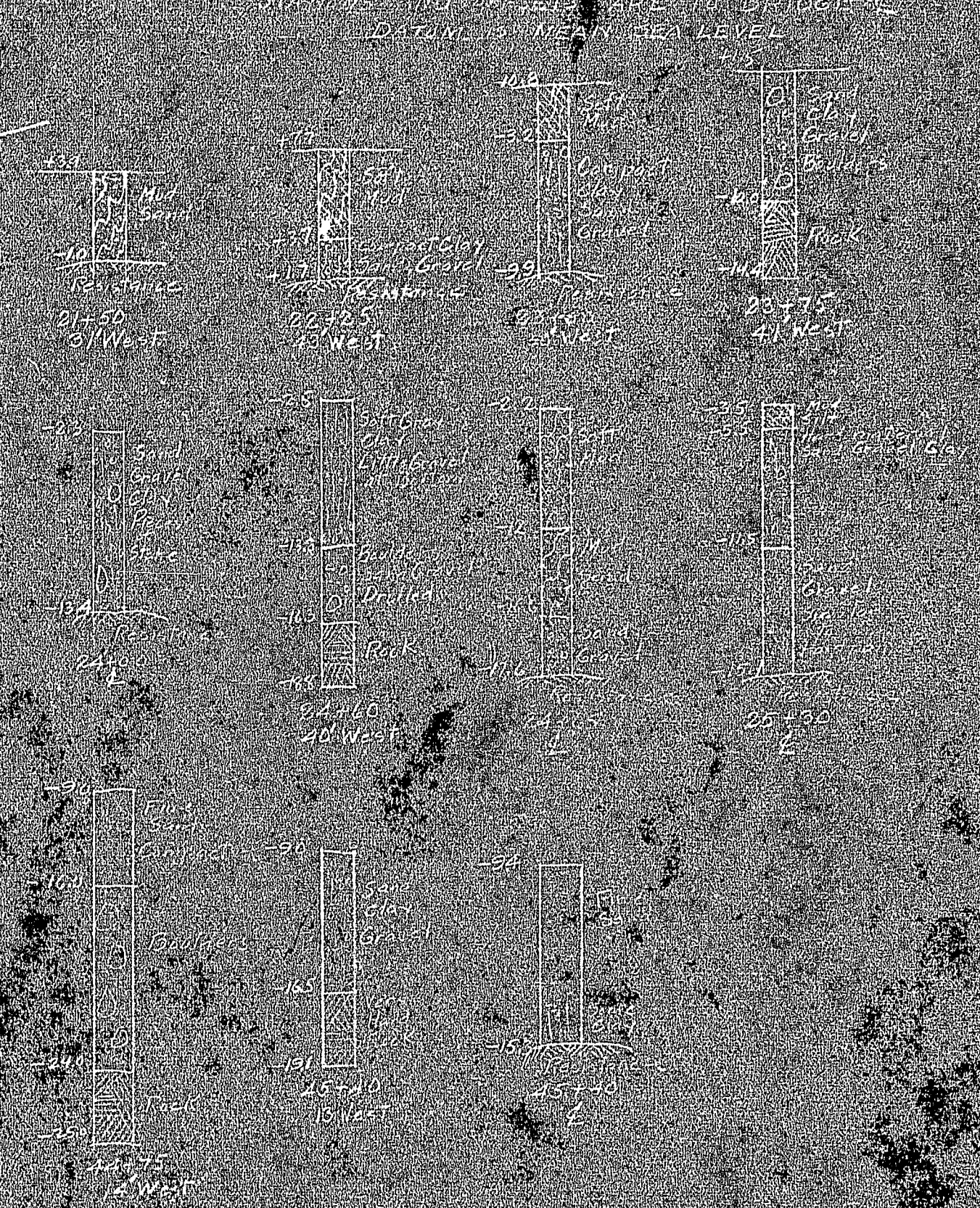
ITEM	UNIT	PIER 1	PIER 2	PIER 3	PIER 6	PIER 7	DEER ISLE
CONCRETE PLACED UNDER WATER	Cu yd.	22	44	69	97	10	15
CONCRETE PLACED IN DRY	Cu yd.	160	64	151	97	10	15
Reinforcement	lb	2310	2570	17,710	11,500	2,790	1,830
Wrought iron	lb	—	13,600	15,270	14,870	4,930	—
Water proofing	Sq. ft.	548	—	—	—	—	—

REQUIRED:
Class A in accordance with A.C.I. specifications.
Anchor bolts, etc., shall be furnished by the contractor for the superstructure and shall be placed by the contractor in the concrete. The latter shall provide a steel frame to hold the bolts in their inaccurate position while concrete is being poured. Reinforcement shall have a minimum cover of 4 inches of concrete. WATERPROOFING: Waterproofing shall be of metal or of approved equal. See specifications.

SECTION A-A
Enlarged Detail showing
Roadway & Drain
Scale 1"=1'-0"

CONCRETE: Concrete placed under water shall be Class A in accordance with A.C.I. specifications. Concrete placed in dry shall be Class A in accordance with A.C.I. specifications. Anchor bolts, etc., shall be furnished by the contractor for the superstructure and shall be placed by the contractor in the concrete. The latter shall provide a steel frame to hold the bolts in their inaccurate position while concrete is being poured. Reinforcement shall have a minimum cover of 4 inches of concrete. WATERPROOFING: Waterproofing shall be of metal or of approved equal. See specifications.

BORINGS



REVISIONS

1-35	Revised from final roadway at Pier No. 6
2-35	Revised from final roadway at Pier No. 6
3-35	Revised from final roadway at Pier No. 6
4-35	Revised from final roadway at Pier No. 6
5-35	Revised from final roadway at Pier No. 6
6-35	Revised from final roadway at Pier No. 6
7-35	Revised from final roadway at Pier No. 6
8-35	Revised from final roadway at Pier No. 6
9-35	Revised from final roadway at Pier No. 6
10-35	Revised from final roadway at Pier No. 6

SUBSTRUCTURE
PIA PROJECT NO. 1010 D
DEER ISLE SEDGWICK BRIDGE DISTRICT
BRIDGE OVER EGGENOGGIN REACH
FROM LITTLE DEER ISLE TO SEDGWICK
HANCOCK COUNTY MAINE

CABLE BENT PIERS
VIADUCT PIERS AND ABUTMENT

ROBINSON AND STEINMAN
ENGINEERS
NEW YORK CITY
SCALE: 1"=1'-0"
DRAWING NUMBER
RS 3310 F114
SEPTEMBER 4, 1937

